

**SITE PLAN NOTES**

1. DEVELOPMENT AND USE OF THIS SITE WILL CONFORM WITH ALL CODES AND ORDINANCES.
2. ALL NEW OR RELOCATED UTILITIES WILL BE PLACED UNDERGROUND.
3. ANY LIGHTING WILL BE PLACED SO AS TO DIRECT LIGHT AWAY FROM ADJACENT RESIDENTIAL DISTRICTS AND WILL NOT EXCEED ONE FOOT CANDLE AT THE PROPERTY LINE. NO NOISE, ODOR, OR VIBRATION WILL BE EMITTED AT ANY LEVEL EXCEEDING THE GENERAL LEVEL OF NOISE, ODOR, OR VIBRATION EMITTED BY USES IN THE AREA OUTSIDE OF THE SITE.
4. OWNERS OF PROPERTY ADJACENT TO PUBLIC RIGHTS OF WAY WILL HAVE THE RESPONSIBILITY FOR MAINTAINING ALL LANDSCAPING LOCATED WITHIN THE RIGHTS OF WAY, IN ACCORDANCE WITH APPROVED PLANS.
5. THIS PROJECT IS LOCATED IN THE CITY OF PHOENIX WATER SERVICES AREA AND HAS BEEN DESIGNATED AS HAVING AN ASSURED WATER SUPPLY.

**PROJECT DATA**

SITE AREA	GROSS	55,331.52 S.F. (1.27 A.C.)
	NET	49,630.36 S.F. (1.17 A.C.)
ZONING		RI-6
TYPE OF CONSTRUCTION		VN
BUILDING AREA		5,239.47 S.F.
OCCUPANCY		E
ALLOWABLE AREA		6,000 S.F.
FIRE SPRINKLER INCREASE -300%		19,000 S.F.
% OF COVERAGE		10.71%
ACCESSIBLE PARKING REQD.		2 STALLS
ACCESSIBLE PARKING PROVIDED		2 STALLS
PARKING REQUIRED		4 STALLS
1 SPACE PER 3 TEACHERS		5 STALLS
1 SPACE PER 5 STUDENTS		2 STALLS
TOTAL REQD.		7 STALLS
PARKING PROVIDED		11 STALLS

**LEGAL DESCRIPTION**

THE NORTH ONE HALF OF TRACT 1, SQUAM PEAK TRACT, ACCORDING TO THE BOOK OF RECORDS IN THE OFFICE OF THE COUNTY RECORDER OF MARICOPA COUNTY, ARIZONA, RECORDED IN BOOK 17 OF MAPS, PAGE 22, EXCEPT THE SOUTH 156.6 FEET.

**OWNER**

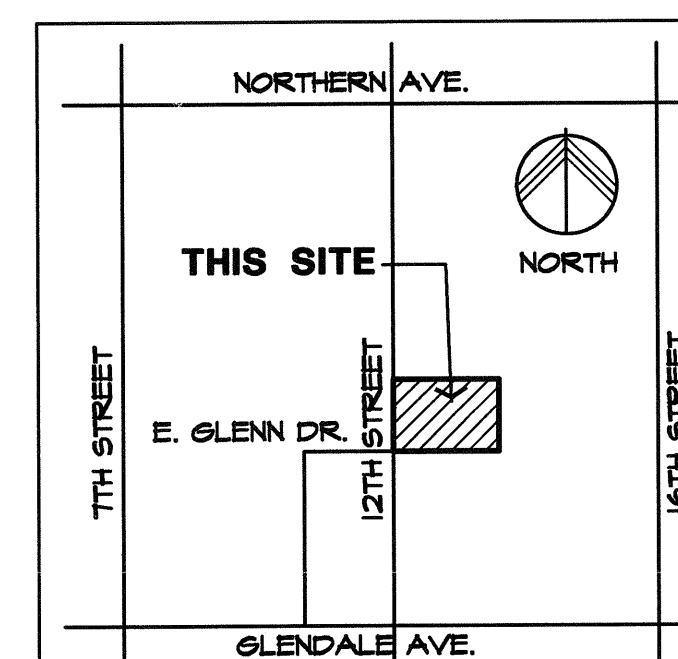
YESHIVA HIGH SCHOOL OF ARIZONA, INC  
 PO BOX 7714  
 PHOENIX, ARIZONA 85011-TT14  
 C/O. MR. GAVRIEL GOETZ  
 602-275-2157  
 RABBI@GOETZ@YESHIVA.ORG

**ARCHITECT/APPLICANT**

IRVIN G. PASTERNAK, A.I.A., P.C.  
 745 E. MARYLAND #100  
 PHOENIX, ARIZONA 85014  
 602-275-2808  
 DPRESTO@PASTERNAK.NET

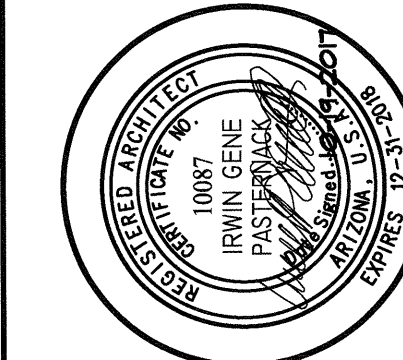
NOTE: SIGNAGE IS NOT PART OF THIS REVISION SEPARATE SUBMITTAL REQUIRED

NOTE: THIS SCHOOL IS NOT AN ARIZONA CHARTER SCHOOL OR AN ARIZONA PUBLIC SCHOOL

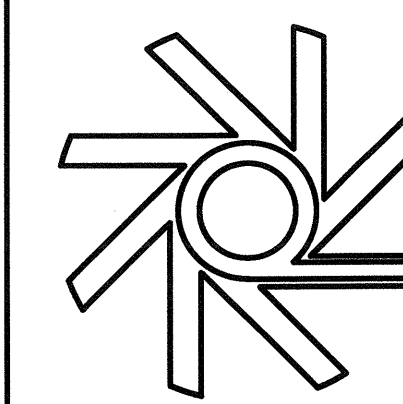


**CITY REFERENCE NUMBERS**

KIVAR#	17-1405
SDEV#	1700271
PAPP	1702205
ZONING	RI-6
ZONING MAP	14
ZONING CASE	2A-24-17
H	25-30
QUARTER SECTION	NONE
CCPH	1700115
PRLM	1704244
APN	160-27-035
ENVR	XXX



**IRVIN G. PASTERNAK AIA, P.C.**  
 ARCHITECTURE - PLANNING - LANDSCAPE - INTERIORS  
 745 EAST MARYLAND AVE. SUITE 100  
 PHOENIX, ARIZONA 85014 275-2808



**YESHIVA HIGH SCHOOL**  
**7045 NORTH 12TH STREET**  
**PHOENIX, ARIZONA**

**TITLE**

SITE PLAN  
 JOB NO.: 217011  
 DATE: 10-19-2017  
 DRAWN BY: DP  
 CHECKED BY: DP  
 REVISIONS:

**ASP-1**

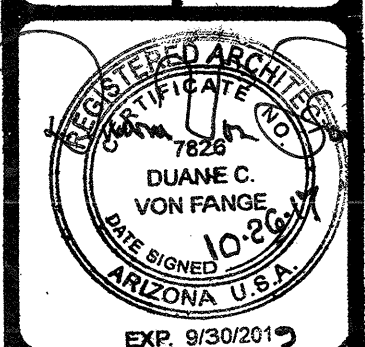
- CODES:**
- 2012 - INTERNATIONAL BUILDING CODE (IBC)
  - 2012 - INTERNATIONAL EXISTING BUILDING CODE (IEBC)
  - 2012 - INTERNATIONAL RESIDENTIAL CODE (IRC)
  - 2012 - INTERNATIONAL MECHANICAL CODE (IMC)
  - 2012 - INTERNATIONAL FUEL GAS CODE (IFGC)
  - 2012 - INTERNATIONAL FIRE CODE (IFC)
  - 2012 - INTERNATIONAL ENERGY CONSERVATION CODE (IECC)
  - 2011 - NATIONAL ELECTRIC CODE (NEC)
  - 2012 - INTERNATIONAL PLUMBING CODE (IPC)
  - 2010 - ADA STANDARDS FOR ACCESSIBLE DESIGN & ICC ANSI A117.1-2009.

**SHEET INDEX**

SHEET NO.	DESCRIPTION
ASP-1	SHEET INDEX, VICINITY MAP, SITE PLAN, GENERAL INFORMATION
ASP-2	SITE DETAILS
P.U.P-1	(CIVIL) PRIVATE UTILITY PLAN
P.U.P-2	(CIVIL) PRIVATE UTILITY PLAN
G&D-1	(CIVIL) GRADING & DRAINAGE PLAN W/ OFF-SITE IMPROVEMENTS - NOTES & GENERAL INFORMATION
G&D-2	(CIVIL) GRADING & DRAINAGE PLAN W/ OFF-SITE IMPROVEMENTS
G&D-3	(CIVIL) GRADING & DRAINAGE PLAN W/ OFF-SITE IMPROVEMENTS - DETAILS
C.F.L.P-1	COMBINED FIRE LINE PLAN - GENERAL INFORMATION
C.F.L.P-2	COMBINED FIRE LINE PLAN
2	FLOOR PLAN WITH OCCUPANT LOAD SCHEDULE
3	EXISTING FLOOR PLAN
4	COMBINATION DEMOLITION PLAN & NEW FLOOR PLAN
5	NEW FLOOR PLAN
6	DIMENSIONED FLOOR PLAN
7	"ACCESSIBLE" PLAN CHECK & EXITING ROUTE
8	FINISH SCHEDULES
9	EXTERIOR ELEVATIONS
10	BUILDING SECTIONS & DETAILS
11	NEW STEEL BEAM AT SANCTUARY - FRAMING PLAN - FOUNDATION PLAN & DETAILS
12	ROOF PLAN
13	REST ROOM PLANS & WALL ELEVATIONS
14	SHOWER WALL ELEVATIONS
15	ACCESSIBLE NOTES & DETAILS
16	DRINKING FOUNTAIN REQUIREMENTS
17	SHOWER ACCESSIBLE REQUIREMENTS
18	REST ROOM SIGNAGE & ACCESSIBLE SIGN NOTES
E-1	GENERAL NOTES / LEGENDS / SHEET INDEX / ONE-LINE DIAGRAM / CALCULATIONS
E-2	PANEL SCHEDULES
E-2.1	COMCHECK - LIGHTING SCHEDULE
E-3	LIGHTING PLAN
E-4	POWER PLAN
E-4.1	SITE POWER PLAN
E-5	SPECIFICATIONS
M-1	MECHANICAL SPECS / SYMBOLS / & SHEET INDEX
M-2	MECHANICAL PLAN
M-3	MECHANICAL SCHEDULES
M-4	MECHANICAL DETAILS
M-5	MECHANICAL COMCHECK
P-1	PLUMBING SPECS, SYMBOLS, AND NOTES
P-2	PLUMBING WASTE PLAN
P-3	PLUMBING WATER PLAN
P-4	PLUMBING SCHEDULES
P-5	PLUMBING DETAILS
L-1	LANDSCAPING PLAN, LANDSCAPE NOTES
L-2	PLANT PALETTE, LANDSCAPE DETAILS
L-3	LANDSCAPE IRRIGATION PLAN
L-4	IRRIGATION DETAILS
L-5	IRRIGATION DETAILS AND NOTES

**VON FANGE & ASSOCIATES**  
 ARCHITECTURE PLANNING

DESCRIPTION: REVISION OF EXISTING BUILDING YESHIVA HIGH SCHOOL, 7045 N. 12TH STREET - PHOENIX, ARIZONA 85014  
 REVISIONS: CITY LOG NO.



**SHEET INDEX**  
 SHEET NO.: ASP-1  
 JOB NO.: 1727  
 DATE: 10-26-17  
 DRAWN BY: D-V  
 CHECKED BY: D-V

**ASP-1**  
 OF 1